

City of Dodgeville, Wisconsin  
Historic Preservation Commission

Application for Certificate  
of Appropriateness

Reference Chapter 16A

100 East Fountain Street  
Dodgeville, WI 53533

Mr. Matthew Honer, Chair  
Phone: 608 335 7341  
Email: honermj@gmail.com

**FOR COMMISSION USE ONLY**

Chair's Signature: \_\_\_\_\_

Date Received: \_\_\_\_\_

Certificate Number: \_\_\_\_\_

Commission Action:

Approved

Disapproved

Date Action Taken: \_\_\_\_\_

Applicant

Name: Rana Malik  
Address: 1 ERDMAN place, Madison.  
Telephone: 416 875 6669 Email rmalik@erdman.com

Owner (if other than applicant)

Name: Wayne Disrud  
Address: 103 E. Fountain st, Dodgeville  
Telephone: 608 576 7084 Email wayne.disrud@accesshealthwi.org

Designations

Historic District:

Downtown

Strong-Jones District

Other:

Old Rock School

Col. Stevens House

Slag Furnace

Peter Spang House

Mining Cabin

Historic Register:

City

State

National

N/A

Nature of Improvement (check all that apply)

Adaptive

Alteration

Conservation

Demolition

New Construction

Rehabilitation

Restoration

Stabilization

Synopsis of project (one sentence):

Infill at existing building with the addition of an elevator, doghouse at roof, extension of existing South canopy and addition of snowstops & drainage at North canopy.

**Two completed copies** of this application must be submitted, along with the following: 1) a detailed description of **EACH** modification and/or improvement; 2) an exact description of all materials being used and the method of application or installation; and 3) include as many of the following as is practicable.

Photographs

Sketches/Renderings

Plans

Specifications

Sample Materials

Other: \_\_\_\_\_

As the owner or authorized agent of the owner(s) of the property that is the subject of this application, I declare that the statements herein and the attached exhibits present the information required for this application to the best of my ability, and that the facts, statements, and information presented are true and correct to the best of my knowledge and belief.

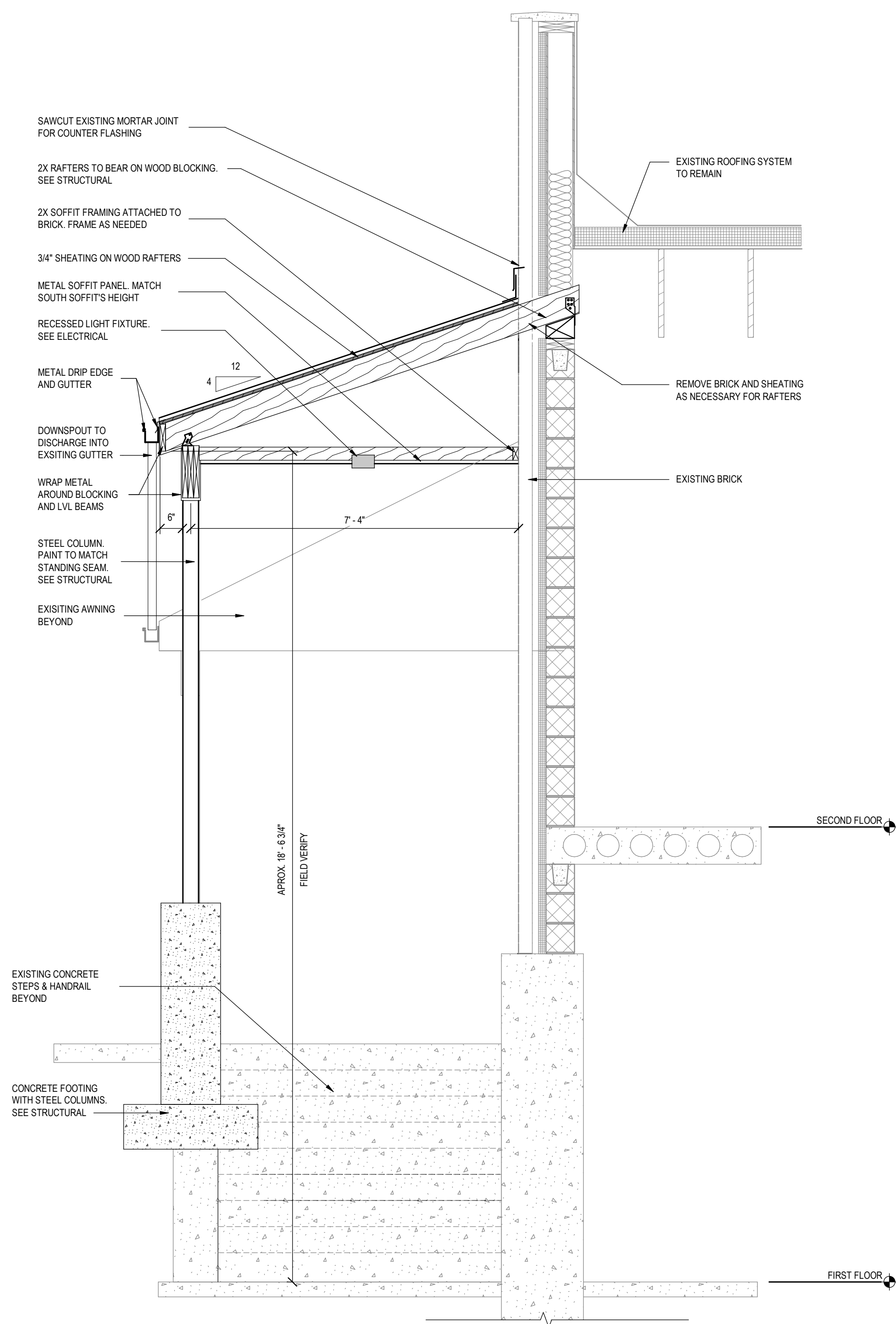
Rana Malik

Signature

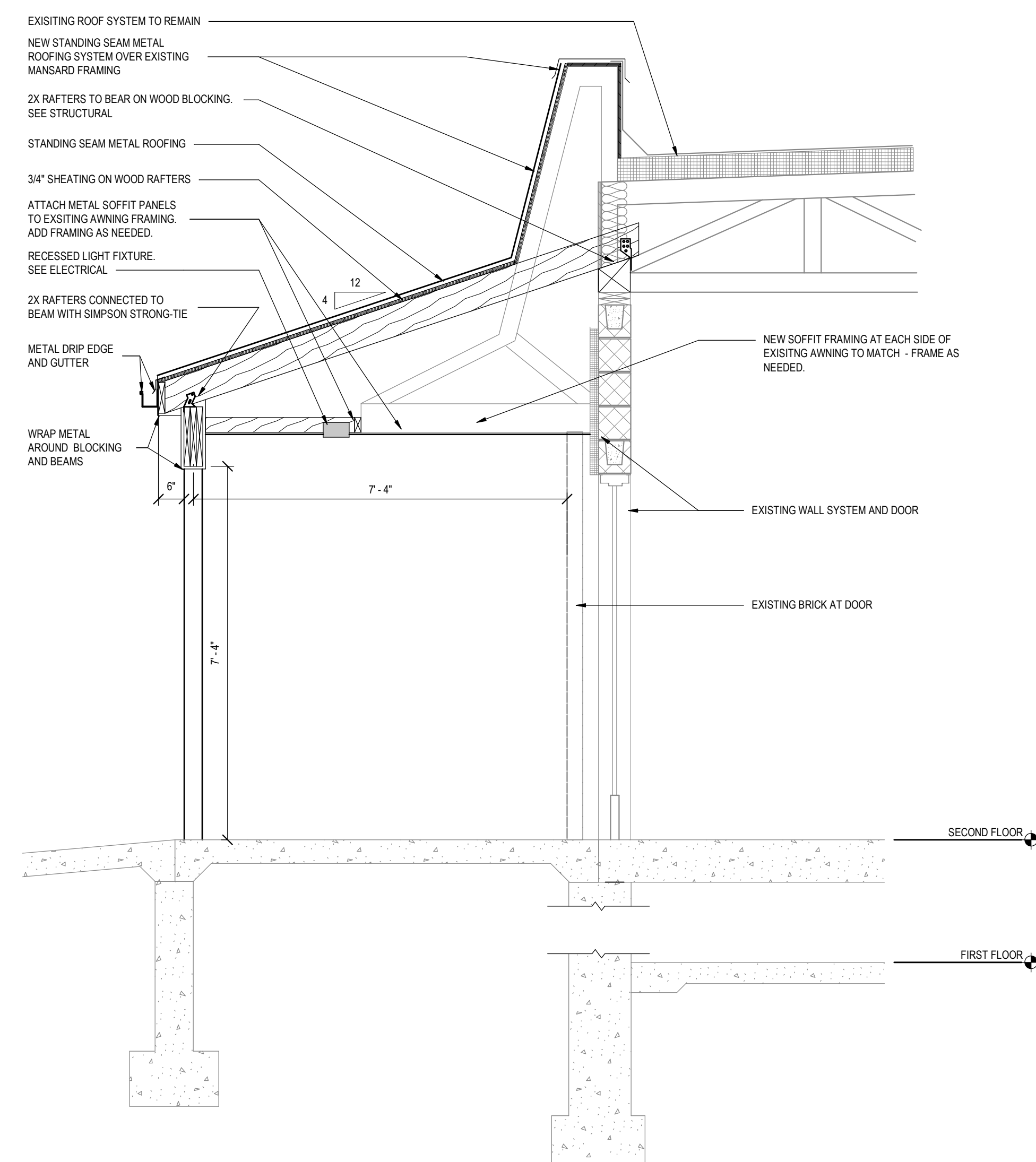
Spring 2022

Estimated Project Completion Date

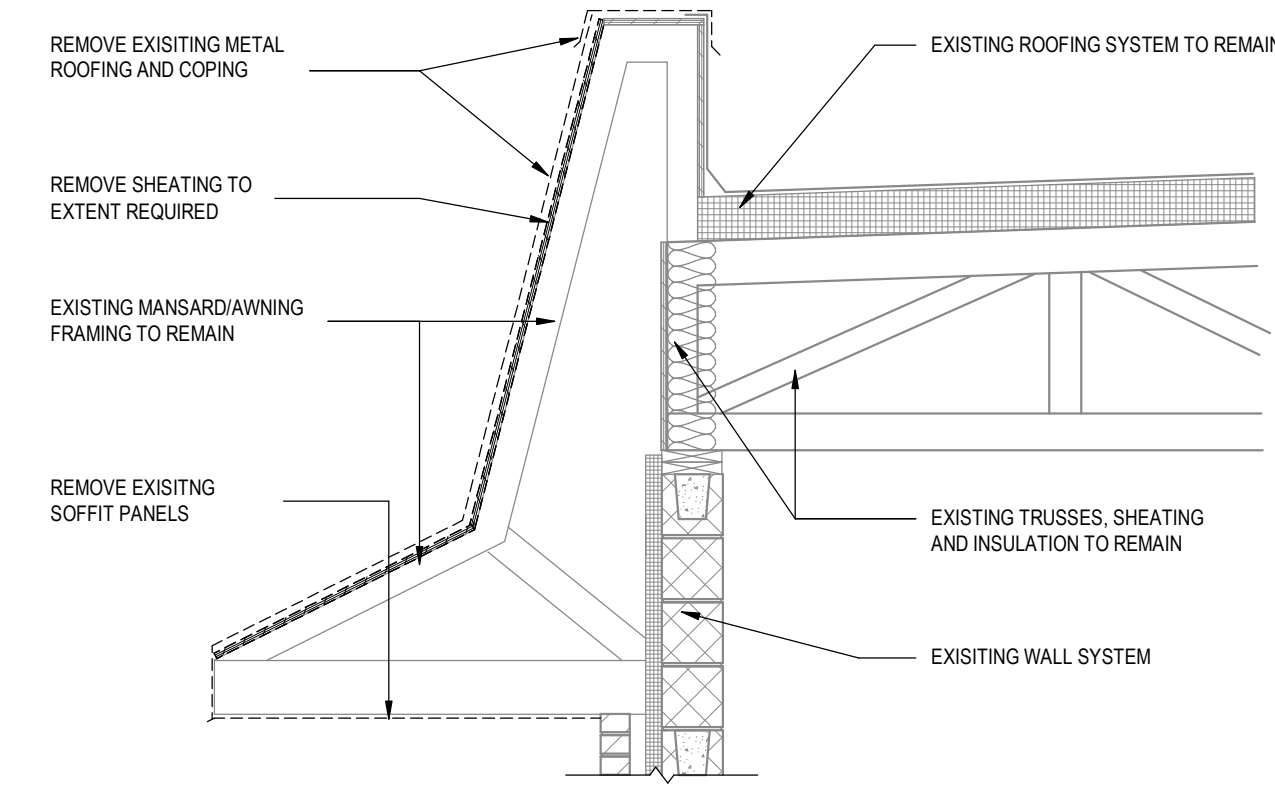
\*\*\* THIS CERTIFICATE MUST BE POSTED, ALONG WITH THE BUILDING PERMIT, AT THE CONSTRUCTION SITE \*\*\*



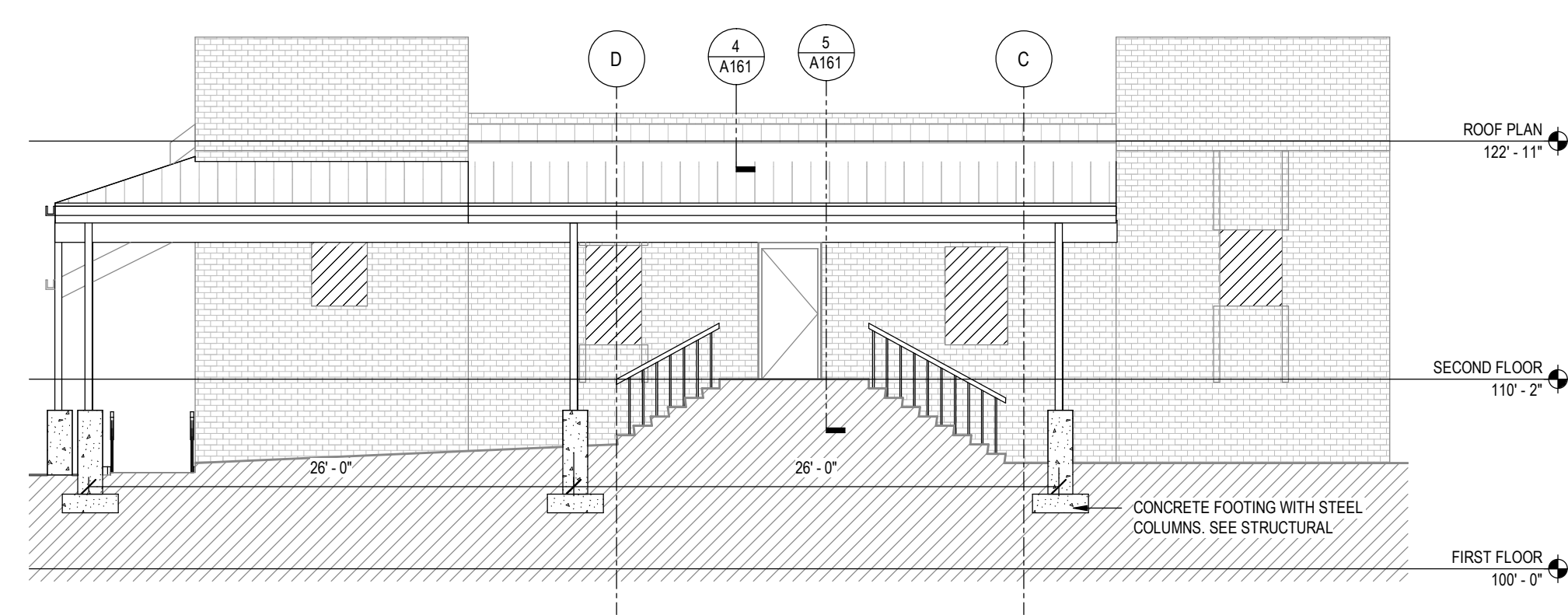
6 AWNING SECTION - WEST  
SCALE: 1/2" = 1'-0"



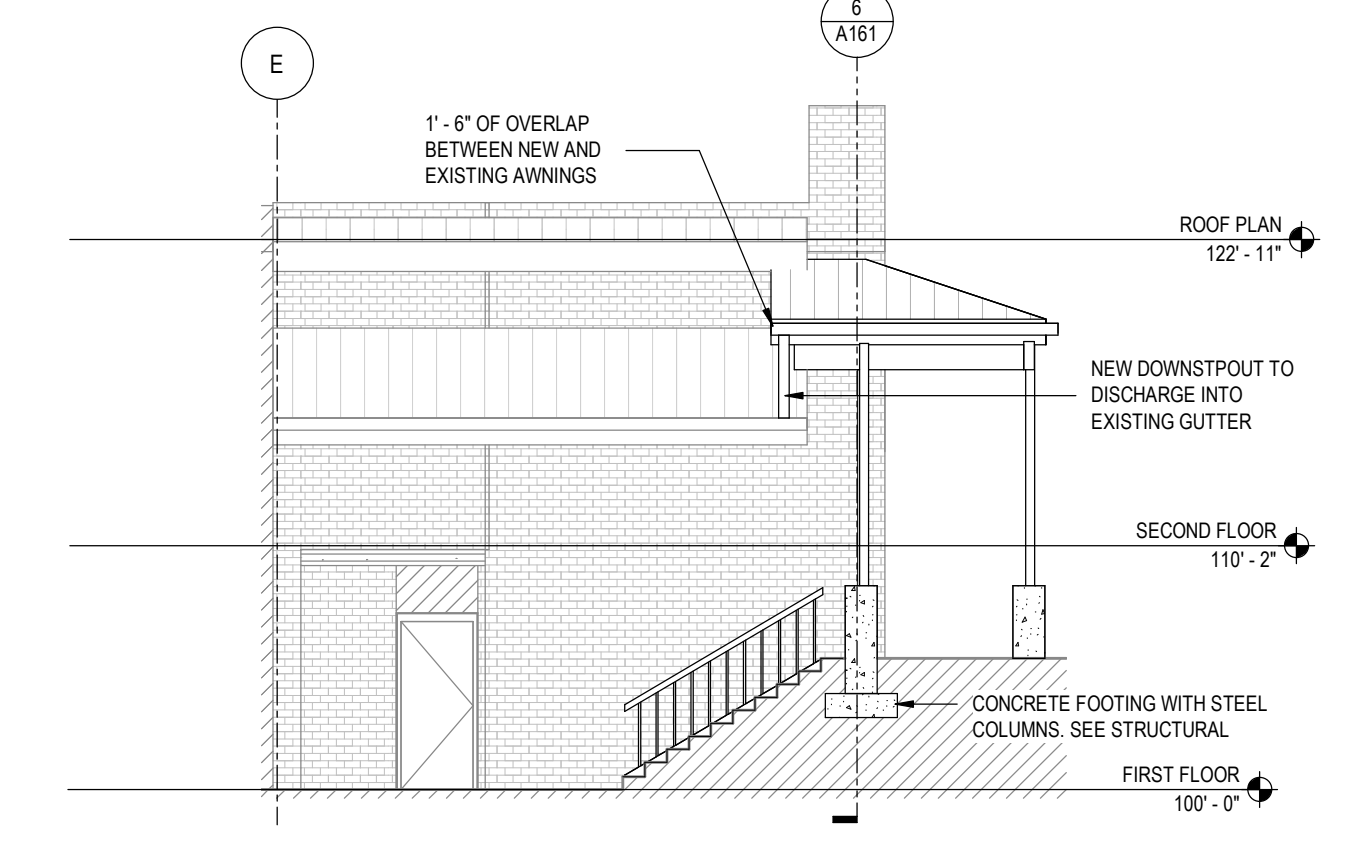
5 AWNING SECTION - SOUTH  
SCALE: 1/2" = 1'-0"



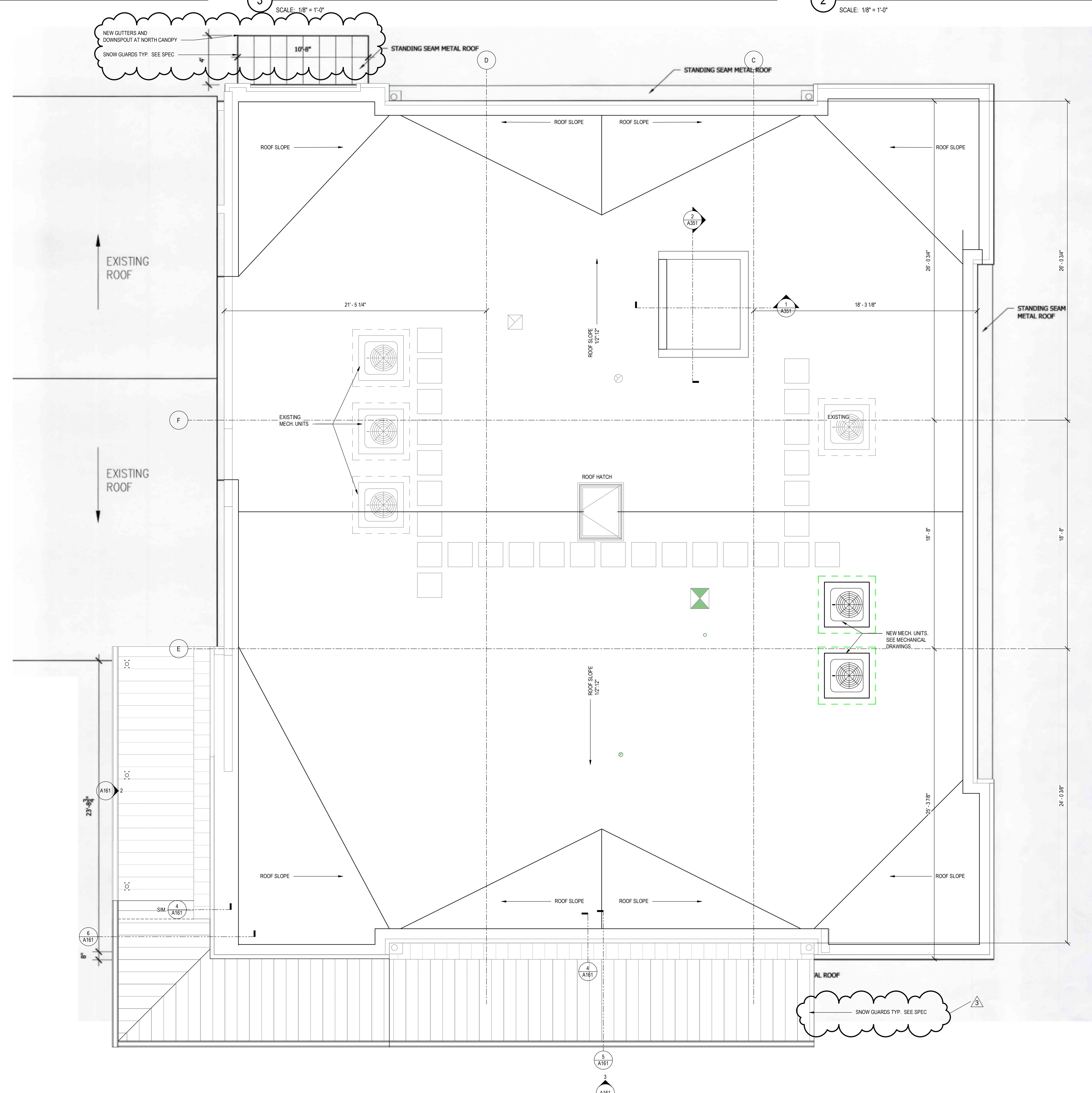
4 EXTERIOR AWNING SECTION - DEMO  
SCALE: 1/2" = 1'-0"



3 AWNING ELEVATION - NORTH  
SCALE: 1/8" = 1'-0"



2 AWNING ELEVATION - EAST  
SCALE: 1/8" = 1'-0"



1 ROOF PLAN  
SCALE: 1/4" = 1'-0"

No.	Description	Date
3	CB 001	10/09/21
2	ADDENDUM 1	09/16/21
1	BID AND PERMIT SET	08/16/21

Document Release



Sheet Name  
**ROOF PLAN & DETAILS**

Dr: MALIK Ch: TOFSON

Sheet Number

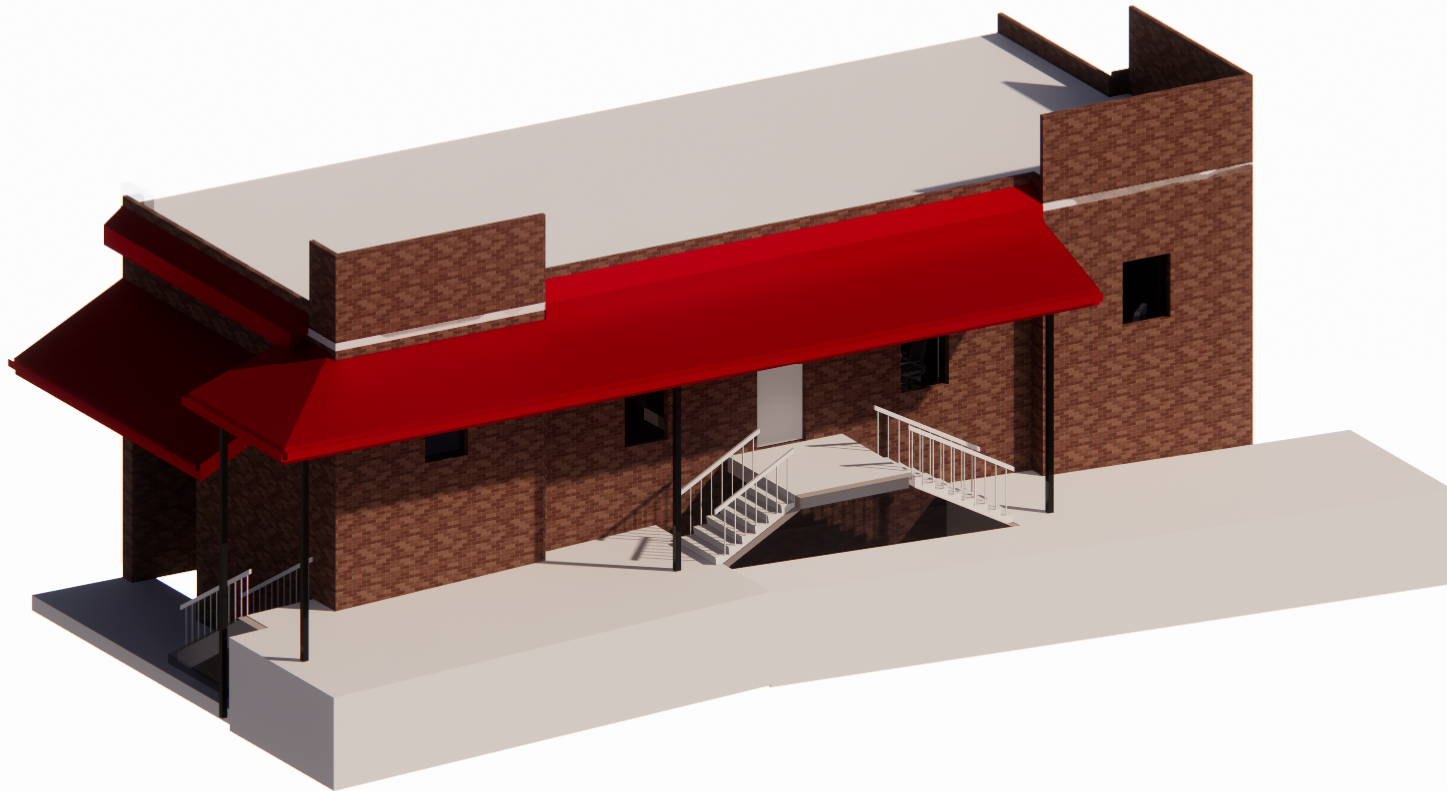
**A161**

JOB # 670720

- Existing South side of 103 E Fountain St.



- Existing North side of 103 E Fountain St.



- Proposed Canopy Extension on South and west side of 103 E Fountain St.
- Proposed addition of gutters, downspouts and snow stops at North, West and South canopies.

**SECTION 076100  
SHEET METAL ROOFING**

**PART 1 GENERAL**

**1.01 SECTION INCLUDES**

- A. Sheet metal roofing and soffit, associated flashings, and underlayment.
- B. Gutters and downspouts.
- C. Snow guards.
- D. Sealants for joints within sheet metal fabrications.

**1.02 RELATED REQUIREMENTS**

- A. Section 077200 - Roof Accessories: Manufactured accessories.

**1.03 REFERENCE STANDARDS**

- A. AAMA 2605 - Voluntary Specification, Performance Requirements and Test Procedures for Superior Performing Organic Coatings on Aluminum Extrusions and Panels (with Coil Coating Appendix).
- B. ASTM A653/A653M - Standard Specification for Steel Sheet, Zinc-Coated (Galvanized) or Zinc-Iron Alloy-Coated (Galvannealed) by the Hot-Dip Process.
- C. ASTM C920 - Standard Specification for Elastomeric Joint Sealants.
- D. ASTM D1970/D1970M - Standard Specification for Self-Adhering Polymer Modified Bituminous Sheet Materials Used as Steep Roofing Underlayment for Ice Dam Protection.
- E. SMACNA (ASMM) - Architectural Sheet Metal Manual.

**1.04 ADMINISTRATIVE REQUIREMENTS**

- A. Preinstallation Meeting: Convene one week before starting work of this section.

**1.05 SUBMITTALS**

- A. See Section 013000 - Administrative Requirements, for submittal procedures.
- B. Product Data: Provide data on metal types, finishes, characteristics, and [\_\_\_\_\_].
- C. Shop Drawings: Indicate material profile, jointing pattern, jointing details, fastening methods, flashings, terminations, and installation details.

**1.06 QUALITY ASSURANCE**

- A. Perform work in accordance with SMACNA (ASMM) requirements and standard details, except as otherwise noted.

**PART 2 PRODUCTS**

**2.01 MANUFACTURERS**

- A. Sheet Metal Roofing Manufacturers:
  - 1. Petersen Aluminum Corporation: [www.pac-clad.com/#sle](http://www.pac-clad.com/#sle).
  - 2. Sheffield Metals International; Galvalume: [www.sheffieldmetals.com/#sle](http://www.sheffieldmetals.com/#sle).

**2.02 SHEET MATERIALS**

- A. Pre-Finished Galvanized Steel Sheet: ASTM A653/A653M, with G90/Z275 zinc coating; 24 gauge, 0.0239 inch minimum base metal thickness, shop pre-coated with PVDF (polyvinylidene fluoride) coating; color as selected.

**2.03 FABRICATION**

- A. Form sections true to shape, accurate in size, square, and free from distortion or defects.
- B. Fabricate cleats of same material as sheet, thickness to match roofing sheet, and at least [\_\_\_] inch wide, interlockable with sheet.
- C. Fabricate starter strips, interlockable with sheet.
- D. Form pieces in longest practical lengths.

670720 / 670720 - Access Community Health- Dodgeville	076100 - 1	Sheet Metal Roofing
--	------------	---------------------

- E. Hem exposed edges on underside 1/2 inch; miter and seam corners.
- F. Form material with standing seams, except where otherwise indicated. At moving joints, use sealed lapped, bayonet-type or interlocking hooked seams.

**2.04 FINISHES**

- A. PVDF (Polyvinylidene Fluoride) Coating: Superior Performance Organic Finish, AAMA 2605; multiple coat, thermally cured fluoropolymer finish system.
- B. Primer Coat: On coated sheets, finish concealed side of sheet with primer compatible with finish system as recommended by finish system manufacturer.

**2.05 ACCESSORIES**

- A. Fasteners: Galvanized steel, with soft neoprene washers.
- B. Underlayment: Self-adhering butyl-rubber sheet complying with ASTM D1970/D1970M; strippable release film.
  - 1. Self Sealability: Passing nail sealability test specified in ASTM D1970/D1970M.
  - 2. Low Temperature Flexibility: Passing test specified in ASTM D1970/D1970M.
- C. Concealed Sealants: Non-curing butyl sealant.
- D. Exposed Sealants: ASTM C920 elastomeric sealant, with minimum movement capability as recommended by manufacturer for sealed substrates; color to match adjacent material.

**PART 3 EXECUTION**

**3.01 EXAMINATION**

- A. Verify roofing termination and base flashings are in place, sealed, and secure.

**3.02 PREPARATION**

- A. Install starter and edge strips, and cleats before starting installation.
- B. Back paint concealed metal surfaces and surfaces in contact with dissimilar metals with protective backing paint to a minimum dry film thickness of 15 mil.

**3.03 INSTALLATION - ROOFING**

- A. Apply underlayment over entire roof area.
- B. Cleat and seam all joints.
- C. Use plastic cement for joints between metal and bitumen and for joints between metal and felts.
- D. Provide gutters.

**3.04 INSTALLATION - STANDING SEAM ROOFING**

- A. Lay sheets with long dimension perpendicular to eaves. Apply pans beginning at eaves.
- B. Lock cleats into seams and flatten.
- C. Stagger transverse joints of roofing sheets.
- D. At eaves and gable ends, terminate roofing by hooking over edge strip.
- E. Bend up one side edge 1-1/2 inches and other edge 1-3/4 inches.
- F. Make first fold 1/4 inch wide single fold and second fold 1/2 inch wide, providing locked portion of standing seam, 5 plies in thickness.
- G. Fold lower ends of seams at eaves over at 45 degree angle.

**END OF SECTION 076100**

670720 / 670720 - Access Community Health- Dodgeville	076100 - 2	Sheet Metal Roofing
--	------------	---------------------

# S-5!<sup>®</sup>

## The Right Way!<sup>®</sup>

### S-5-N Clamp

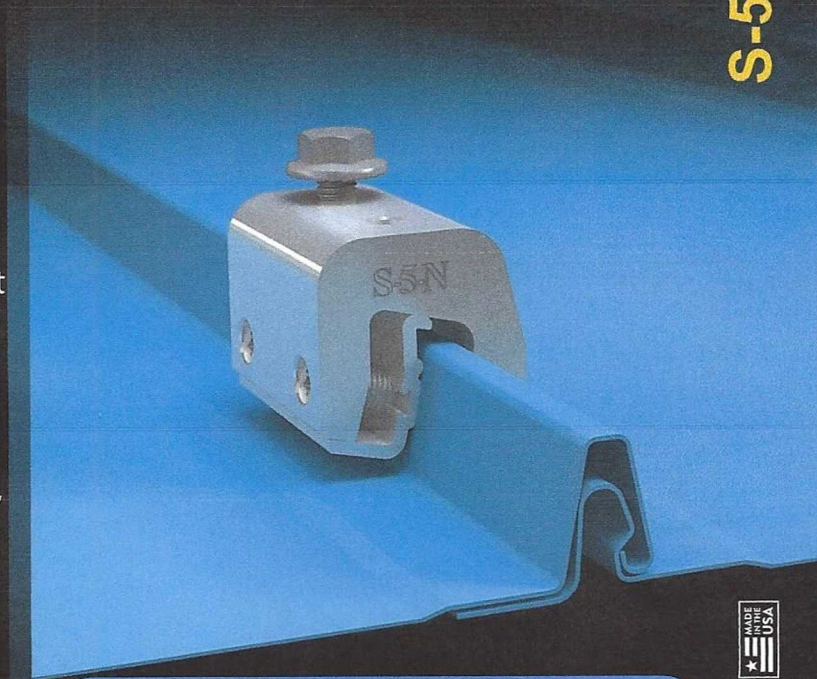
S-5! introduces the new and improved S-5-N clamps. The new design features an innovative insert that ensures a superior fit for new and wider nail strip profiles as well as older ones.

The S-5-N (standard) clamp is the best choice for snow retention and other heavy and load-critical applications. It is designed for use on the most popular 1" nail strip metal roofs, including: Taylor Metal's Easy Lock<sup>TM</sup>, ASC Building Products' Skyline Roofing<sup>®</sup>, McElroy Metal's Meridian, New Tech Machinery's FF100, Schleich 1" Nail Strip, and roofing types with similar profiles.

### S-5-N Mini Clamp

The S-5-N Mini offers correct fit to the same profiles as the standard S-5-N but is shorter and has one setscrew rather than two. The Mini is ideal for attaching various rooftop accessories, such as solar arrays, signs, walkways, satellite dishes, lightning protection systems, antennas, rooftop lighting, conduit, condensate lines and other lighter load applications\*

\*S-5! Mini clamps are not compatible with, and should not be used with S-5! SnoRail<sup>™</sup>/SnoFence<sup>™</sup> or ColorGard<sup>®</sup> snow retention systems.



### FEATURES AND BENEFITS

- Angled setscrews for easier installation - no special tools required
- Fits seam profiles having base of rib dimension < .82"
- Structural aluminum (6061-T6) clamp body and 300 series SS fasteners offer superior corrosion resistance & strength
- Clamp insert to facilitate installation and fit
- New design ensures straighter clamp position on seam

The right way to attach almost anything to metal roofs!

S-5-N and S-5-N Mini



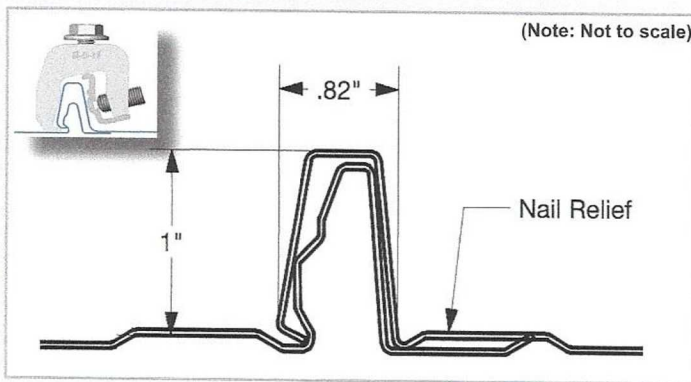
888-825-3432 | [www.S-5.com](http://www.S-5.com)

The new and improved S-5-N features angled setscrews, a wider throat, and an insert for easy installation and best fit for wider nail strip profiles.

The **S-5-N** and **S-5-N Mini clamps** are each supplied with the hardware shown to the right. Each box also includes a bit tip for tightening setscrews using an electric screw gun. The S-5-N is a structural aluminum attachment clamp, compatible with most common metal roofing materials (excluding copper). All included hardware is 300 series stainless steel. Please visit [www.S-5.com](http://www.S-5.com) for more information including CAD details, metallurgical compatibilities, and specifications.

**S-5!® holding strength is unmatched in the industry.**

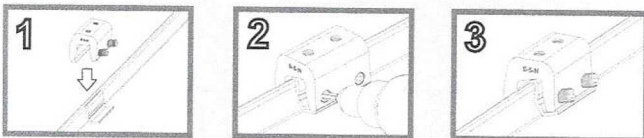
## Fits Panels Up to .82"



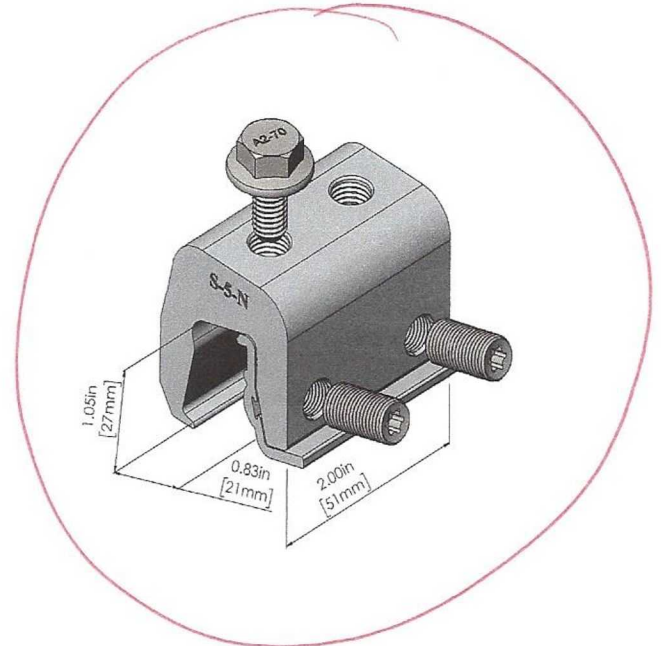
(NOTE: Seams that exceed maximum allowance at the widest part of the seam will require hand crimping to allow the clamp to fit).

## Ease of Installation...in 1...2...3

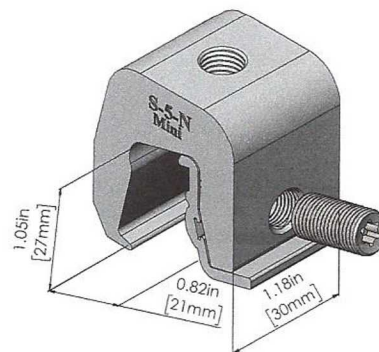
**Installation Simplified:** The S-5-N is still just as quick and easy to install as other S-5 clamps. But now, we've angled the setscrews toward the installer, allowing easier access with a screw gun, simplifying tool removal once the setscrew has been tightened - ensuring the clamp sits straighter on the seam. Choose the S-5-N for a non-penetrating solution that protects the roof while providing excellent holding strength.



## S-5-N Clamp



## S-5-N Mini Clamp



*✶ NOT Available at this time*

**S-5!® Warning! Please use this product responsibly!**

Products are protected by multiple U.S. and foreign patents. Visit the website at [www.S-5.com](http://www.S-5.com) for complete information on patents and trademarks. For maximum holding strength, setscrews should be tensioned and re-tensioned as the seam material compresses. Clamp setscrew tension should be verified using a calibrated torque wrench between 160 and 180 inch pounds when used on 22ga steel, and between 130 and 150 inch pounds for all other metals and thinner gauges of steel. Consult the S-5! website at [www.S-5.com](http://www.S-5.com) for published data regarding holding strength.

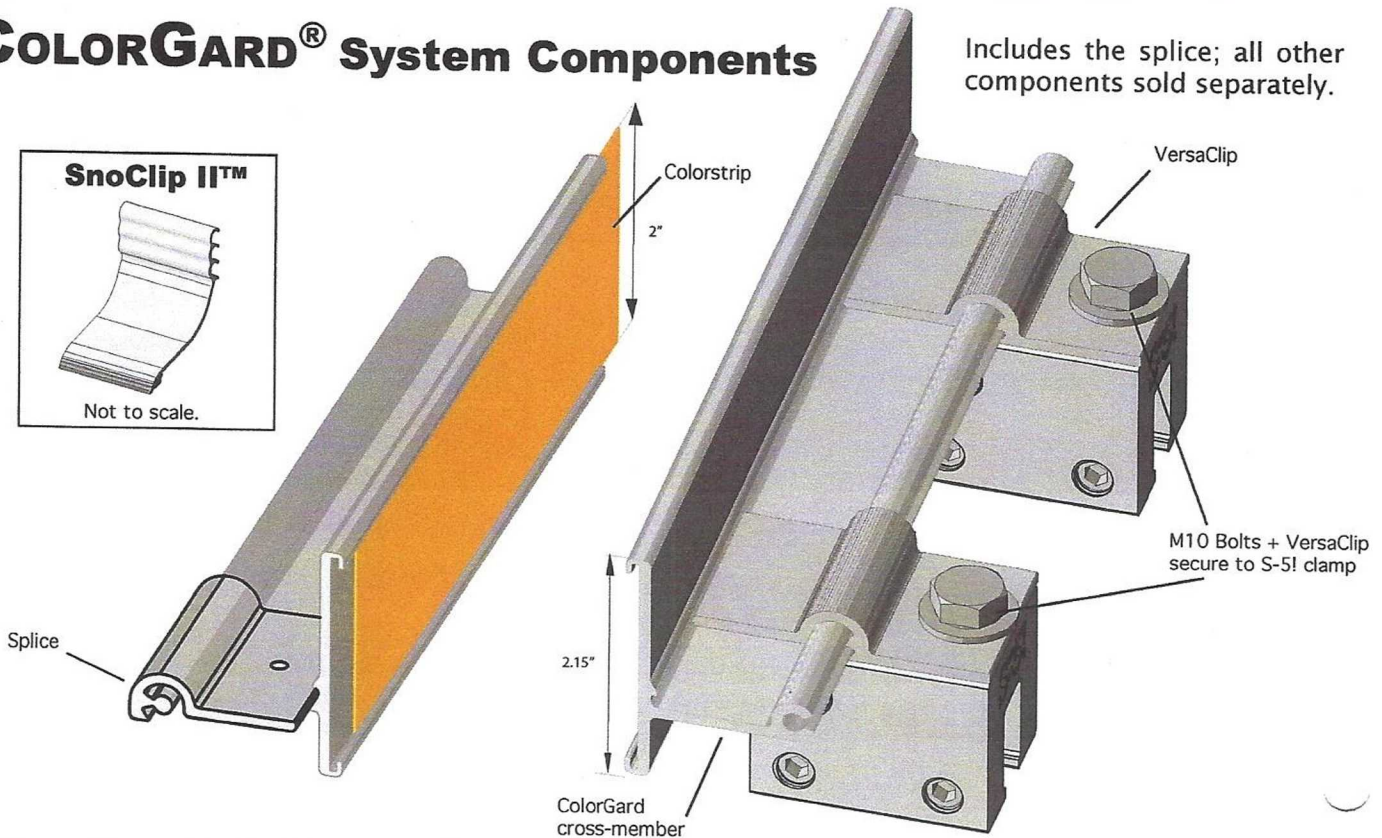
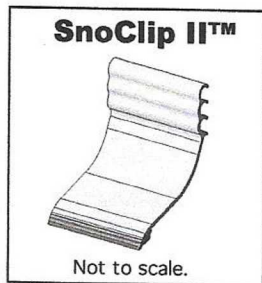
Copyright 2021, Metal Roof Innovations, Ltd. S-5! products are patent protected. S-5! aggressively protects its patents, trademarks, and copyrights. Version 081321.

Distributed by



**S-5!**<sup>TM</sup> Unprecedented Innovation  
Unmatched Quality  
Unbelievable Price

## COLORGARD<sup>®</sup> System Components



### How Easy Is It To Install?

Once designed, ColorGard<sup>®</sup> is easy to install and requires only tools that are common to the trade. First, using an electric gun (and driver tip provided with the clamps), attach the S-5!<sup>TM</sup> clamps true-to-line on the roof seams. Next, slide the color strip into the cross-member, and bolt the cross-member to the clamps also using splice-connectors provided. Then simply snap on the SnoClips<sup>TM</sup>.



#### S-5!<sup>TM</sup> Warning! Please use this product responsibly!

For maximum holding strength, setscrews should be tensioned and re-tensioned as the seam material compresses. Screw tension should be verified using a calibrated torque wrench between 160 and 180 inch pounds when used on 22ga steel and between 130 and 150 inch pounds for all other metals and thinner gauges of steel. Consult the S-5!<sup>TM</sup> website at [www.S-5.com](http://www.S-5.com) for published data regarding holding strength.

Copyright © 2008, Metal Roof Innovations, Ltd. S-5!<sup>TM</sup> products are patented by Metal Roof Innovations, Ltd.

Because S-5!<sup>TM</sup> ColorGard<sup>®</sup> uses mechanical attachment rather than adhesives, installation can be done any time of year, with no cleaning, no priming, no cure times, and no call-backs!

### What About Cost?

S-5!<sup>TM</sup> ColorGard<sup>®</sup> is the best buy on the market!

This is the best news of all! ColorGard<sup>®</sup> has greater holding strength, better aesthetics, longer service life, AND lower installed cost than any other engineered system on the market. Pound-for-pound of holding strength, ColorGard<sup>®</sup> is also a better buy than individual cleat type units.

Distributed by

# S-5!™

Unprecedented Innovation  
Unmatched Quality  
Unbelievable Price

COLORGARD®



## Why ColorGard®?

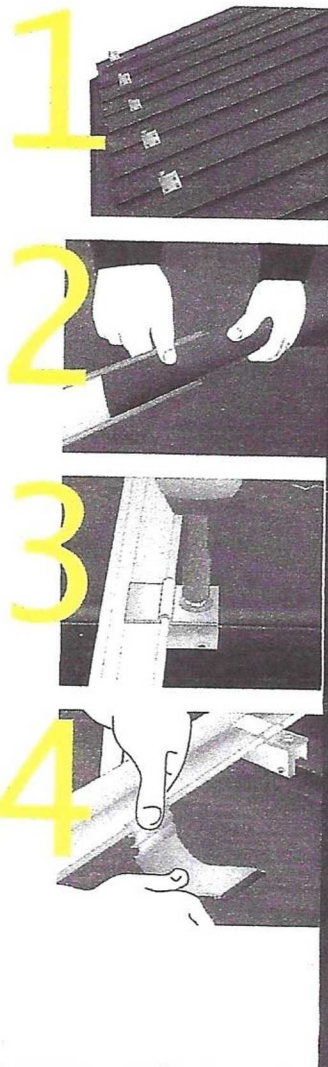
The sudden and unexpected release of snow from the roof can be dramatic, posing serious threat to property and passers-by. ColorGard® dramatically reduces the risks associated with rooftop avalanche and maintains the clean, colorful appearance of the roof with perfect color and finish matching that lasts as long as the roof itself! ColorGard® is the only snow retention system designed and engineered on a site-specific basis; guaranteed to perform, not damage the roof or finish, and to exactly match the roof color—for the entire life of the roof\*. No other snow retention system or product can make these claims.

Today's premium Kynar and Hylar (PVDF) paint systems used on metal panels are "coil-coated" and oven-cured. This is the only finish application method that can be warranted against color fade for 30 years or longer. Nothing can equal it.

So, why settle for less in a snow guard system? While some dyes, powder-coats and air-dried color application methods may initially simulate a perfect match, the color soon begins to fade and becomes increasingly mismatched with a few years of age. But, by utilizing a strip of the actual roof material, ColorGard® perfectly matches the roof—forever!

\* See Optional Limited Lifetime Warranty information at the S-5!™ website ([www.S-5.com](http://www.S-5.com)).

- Unsurpassed holding strength.
- Perfect color-match.
- Easy to install.
- Optional lifetime warranty.\*



Attach almost anything to standing seam metal roofs without piercing the panel!

888-825-3432

[www.S-5.com](http://www.S-5.com)